



Understanding you

Philips BV Pulsera mobile C-arm

PHILIPS
sense and simplicity

If you are looking for more power and flexibility to perform challenging interventions, the BV Pulsera is right for you. This mobile fluoroscopy system is our interventional powerhouse. It is ideal for performing long minimally invasive cardiovascular, orthopedic, and neurosurgical procedures as well as routine pain management and thoracic surgery interventions.

Giving you the power

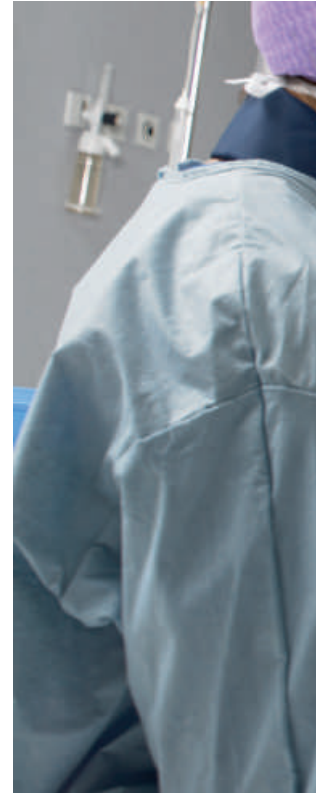
From standard pacemaker implants and biventricular implants to bypass checks and abdominal aortic aneurysm repair, the BV Pulsera has the imaging clarity and power to enable you to do your best work yet.

True to its name, the BV Pulsera pulses with power. Thanks to its highly efficient X-ray componentry and exceptional heat management capabilities, it keeps pace with your longest cardiovascular and interventional procedures. That's not all.

Its rotating anode technology and automatic high penetration mode give you the power to see through virtually any normal or obese patient. You're able to see the fine clinical details in steep projections and observe fast moving anatomy.

You can choose either a 9" or 12" image intensifier to meet your clinical needs:

- Cardiovascular procedures
- Orthopedic surgery
- Pain management procedures
- Abdominal surgery
- Neurosurgical procedures
- Thoracic surgery



The BV Pulsera offers you a combination of advanced imaging technologies across the imaging chain that result in high quality images using an efficient X-ray dose.

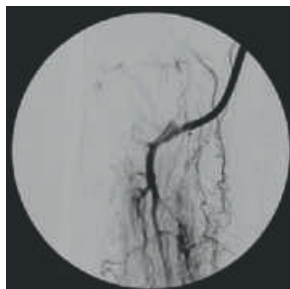
and flexibility to make a difference



The full digital 1K2 imaging chain includes powerful image processing functions such as advanced noise reduction and 2D edge enhancement, providing you with high quality images time after time:

- The pulsed exposure mode produces superb image contrast and provides you with sharp appearance of motion.
- Unique BodySmart software gives you consistently superb image contrast. It finds, tracks, and precisely defines the field of view to anatomy – no matter where it is on the image intensifier.
- Automatic Shutter Positioning sets shutters to the anatomy of interest for a high quality image at the touch of a button.
- Automatic contrast/brightness optimizes the image in real-time.

Peripheral leg arteries



Left coronary arteries



Pelvis fracture repair



Low X-ray dose for you and your



The BV Pulsera is designed to give you more space in the OR by taking up less of it.

DoseWise

Manage radiation exposure and increase awareness with our comprehensive DoseWise program.

- Philips unique beam filters reduce patient skin X-ray dose by approximately 40% over conventional filters.
- The pulsed fluoro mode can reduce X-ray dose significantly.
- Shutters and image orientation can be adjusted while on the last image hold, without using radiation.
- Dose reporting, dose display and an alert when exceeding a pre-defined procedure dose-level contribute to an increased dose awareness.

patients in a compact system

Mobile View Station

Get extra comfort during long procedures with the flexible Mobile View Station. The height and position of the monitors can be adjusted to the surgeon's convenience – whether sitting or standing. Thanks to its compact size, it can be brought as close to the operating table as desired without getting in the way of other equipment. You can easily move it around the tight confines of the operating room or other wards. Its unique design also makes it easy to clean.

With the BV Pulsera and the intelligent viewing concept, the operator can enter patient demographics manually or retrieve a worklist via the hospital network. All this functionality is available while the Mobile View Station is already positioned at the surgical table. At the start of the procedure, the operator simply needs to turn the monitor towards the physician. Later, the monitors can be turned back to the operator to process the images and send them to PACS. To ensure high quality image display, the Mobile View Station is equipped with 19" LCD monitors. After use, the monitors can be lowered and folded away for easy transport and storage.



Lower and fold the monitors for transport and adjust them to the optimal working position during procedures

Increasing your efficiency and

Increase your efficiency in many ways with the BV Pulsera. Thanks to its ultra compact footprint and C-arc handles, it can be quickly moved into place. With the single user concept and Anatomically Programmed Fluoroscopy (APF) parameters, you can easily control every step of your procedures.

The BV Pulsera has a fully integrated DICOM connectivity solution (full RIS/HIS compatibility, export of examination onto the hospital network) and is IHE compliant.

An intuitive user-interface, with buttons exactly where you need and expect them to be, makes working with the BV Pulsera easy and fast.

With a touch screen (optional) on the left monitor, patient administration and post-processing on acquired images is literally at your fingertips.

All extras such as the paper/transparency printer and Medical DVD recorder can of course easily be accommodated into your Mobile View Station.

A long productive lifetime

When you invest in the BV Pulsera, you invest in the future. We have over 50 years of experience in developing and servicing mobile C-arm systems, so we can provide the support you need to keep your system in peak condition. Thanks to Philips ongoing commitment to developing technology, your BV Pulsera system can stay up-to-date throughout its lifecycle, embracing new applicational demands and technical advances as they arise.

Your needs, your support

As your healthcare business changes, we are changing right alongside you. Today's healthcare providers are looking for more flexibility in the support they receive from their imaging partners. Just as our BV Pulsera is the result of a close collaborative process, our Service

Philips Remote Services

Our worldwide Remote Services is an advanced, virtual private network that links your Philips Healthcare equipment to our global Remote Services Customer Care Centers. Services that formerly required onsite visits are now available by connecting to our remote experts.

This includes system error identification, diagnosis, and troubleshooting, as well as immediate remote repair online.

- Equipment remains more reliable through proactive monitoring, remote diagnoses, and remote repair.
- Increases uptime.
- Reduces interruptions to care.
- Peace of mind that equipment is operating at peak performance.

workflow



Agreements have been designed from the ground up based on extensive input from healthcare providers to meet their service challenges and business priorities.

Whether you want to reduce your operational risk and equipment downtime, leverage your in-house service capabilities, or use your system more effectively. You choose the support that is the right fit for your facility. Our flexible portfolio of Service Agreements offers a range of coverage – from premium service plans to an à la carte solution for customers with in-house engineering teams – that align with your budget and in-house resources. We can also tailor a service offer as needed. And of course, as your needs change, our support is flexible enough to change with you. We are here to support you in moving forward.

**Philips Healthcare is part of
Royal Philips Electronics**

How to reach us

www.philips.com/healthcare
healthcare@philips.com

Asia
+49 7031 463 2254

Europe, Middle East, Africa
+49 7031 463 2254

Latin America
+55 11 2125 0744

North America
+1 425 487 7000
800 285 5585 (toll free, US only)

This document is not for distribution in
North America.

Certain features described in this brochure
are optional or may not be available in some
countries. Please contact your local Philips
representative for further details.

Please visit www.philips.com/surgery



© 2012 Koninklijke Philips Electronics N.V.
All rights are reserved.

Philips Healthcare reserves the right to make changes in specifications and/or to discontinue any product at any time without notice or obligation and will not be liable for any consequences resulting from the use of this publication.

Printed in The Netherlands.
4522 962 85111 * SEP 2012